



AILY GROUP

ERICK

UV4062PRO

4062 UV FLATBED PRINTER

[UV FLATBED PRINTER 4062 PRO]

[4062 UV Flatbed Printer]

- 400mm AI Scanner System-300DPI
- More Stable Negative Pressure Ink Supply System
- Max 400mm Print Height Luggage Printing
- Automatic PrintHeads Maintenance-Per 6 hours Pressing Ink

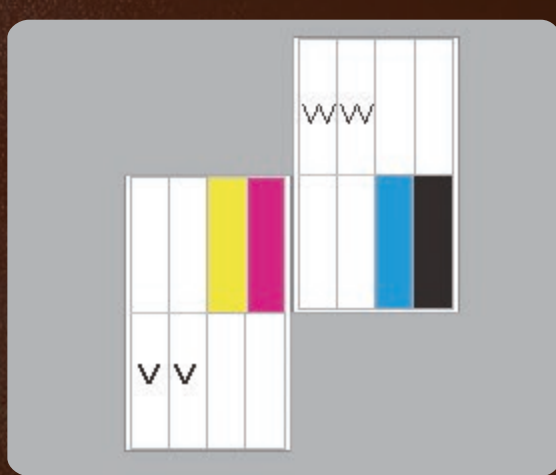


The 4062 UV flatbed printer with AI scanning is a top-of-the-line piece of equipment designed for large-scale industrial production. It combines an ultra-large printing area with cutting-edge AI intelligence, solving not only the problem of "making large prints" but also the core needs of modern production: "making prints quickly, accurately, and cost-effectively."



Max 400mm Print Height

The printhead can be raised to a position up to 400mm above the platform surface, enabling printing on very thick or three-dimensional surfaces.



2Pcs Epson I1600 Can Print CMYK W V

Utilizing the Epson I1600 high-precision piezoelectric printhead, ensuring both print quality and speed. Ink System: Equipped with a comprehensive 6-color ink system (C, M, Y, K, W, V). It enables standard color printing.



300dpi Latest UV Ai Scanner Positioning Print

The 4062 UV flatbed printer, integrating 300dpi high precision and the latest AI visual positioning technology, is a model of precision, automation, and intelligent manufacturing.



2.5-3D Embossed Tactile Printing

The 4062 UV flatbed printer, equipped with 2.5D-3D embossed tactile printing capabilities, is a cutting-edge device that pushes digital printing technology towards three-dimensionality and tactile sensation.



None after-service negative Ink supply system

Minimize routine maintenance, eliminate printing interruptions due to ink supply issues, and significantly reduce users' long-term operating costs and concerns.



Automatic Maintenance Every 6 hours Auto Pressing Ink

The printer system automatically performs a preset, efficient printhead maintenance program every 6 hours.

[Product details]

Print Software	Ripprint/Photoprint
All-In-One Computer Configurations	8th Generations i7-8750H Processor, 64G/128G, 15.6-inch 1920x1080 Touch Screen
Machine Functions	400mm Print Height, UV AI Scanner, Auto Moisturizing&Pressing Ink
Printing Heads	2pcs Epson Original I1600-U1
Machine Configurations	Hiwin Guiderail, Leadshine Motor, Negative Capping Stations, All-In-One Computer(optional)
Printing Speed	6pass 2 m ² /h, 8pass 2 m ² /h, 12pass 1.2 m ² /h
Print Colors	CMYK W V
Working Environment	1350*1000*1300mm Space, 1500W Electricity Power, 25°C-30°C humidity 50%-70%
Package Info	1500*1150*1500, 230KG, 2.59m ³ , 6sets/ Per 20ft, 12sets/Per 40ft

[Application Scheme]

